

# OFFICIAL

SEPTEMBER 26, 2012, 23<sup>rd</sup> DAY OF  
THE JULY ADJOURN TERM

The County Commission met in the Commission Hearing Room at 5:30 p.m. with Ron Houseman, Danny Strahan, and Jim Straffuss present. Guests present were James Strahan, Taney County Assessor; Donna Neeley, County Clerk; Carol Shoemaker, Missouri Department of Economic Development; and Jonas Arjes, Taney County Business Development Partnership; Kim Crouse, EEZ Board; Rebecca Roberts, EEZ Board; Carless Osbourn, EEZ Board; Dr. Doug Hayter, EEZ Board; Chet Dixon, EEZ Board. Also present were the following members of the public: Angela Leist, Sherrie Anderson, Dean Kruithof, Rod Glaze, Shawn Pingleton, Ross Summers, Phil Bevers, Jan Clark, Rick Ziegenfuss, Bethany Thomas, Mark Weisz, T. McLoney, Steve Maxwell, Kody Schmitt, Steve Critchfield, Jeff Seifried, Bob Donnly, Darrel Cornelius, Cy Murray, Matt Reinig, Garrett Anderson, Abigail Maxwell, Brand Kupp, and Scott Rodgers. The following proceedings were had and made a matter of record:

Commissioner Houseman Called the meeting to order, Commissioner Straffuss lead with prayer, and Commissioner Strahan led the Pledge of Allegiance.

### **Public Hearing of the Enhanced Enterprise Zone Tax Benefit Program**

Commissioner Houseman opened the meeting by explaining the purpose of the public hearing pursuant to Missouri Revised Statutes and that it is part of the process wherein members of the public who wish to speak for or against a proposal may do so, it is also the appropriate venue for the public to ask questions, to offer recommendations, suggestions or opinions. Commissioner Houseman stated that he was proud to say that cities and chambers within Taney County have been working together in a collaborative effort to work towards economic development within Taney County. Commissioner Houseman stated that as a unified team we created the Taney County Business Development Partnership Board, and the board in turn, had hired Jonas Arjes, who has spear headed the efforts to revitalize economic development within the county. Commissioner Houseman added that Jonas has been great to work with, in that he has been given a number of chores and he has successfully brought to us answers each time.

Commissioner Houseman yielded the floor to Jonas Arjes of the Taney County Business Development Partnership. Jonas said that it has been a process for 6 plus years and he thanked the cities and villages for getting the ordinances passed and paperwork completed. First, Blight Ordinances had to be passed for each political subdivision. Next will be the passing of the ordinances that will establish our North American Industry Classification System Codes that will be eligible in our enhanced enterprise zone. And finally, the local tax abatement. The Enhanced Enterprise Zone Board is proposing it to be a maximum of 50% for the maximum amount of time of ten years, which is the minimum requirement to qualify for the state program.

Jonas Arjes opened the floor to public comment. Commissioner Houseman directed that one person come to the podium and sign the sheet at a time.

The following were in support of the EEZ: Rick Ziegenfuss, Ross Summers, Cy Murray, Jeff Seifried, Steve Critchfield, Shawn Pingleton, Dr. Doug Hayter, Sherrie Anderson, Angela Leist, and Brand Kupp.

The following were against the EEZ: Kody Schmidt due to EEZ's failing in other cities; Steve Maxwell due to this being a "New Deal" type of initiative; Scott Rodgers, owner of DS&F Plumbing, due to the possibility of Imminent Domain abuse.

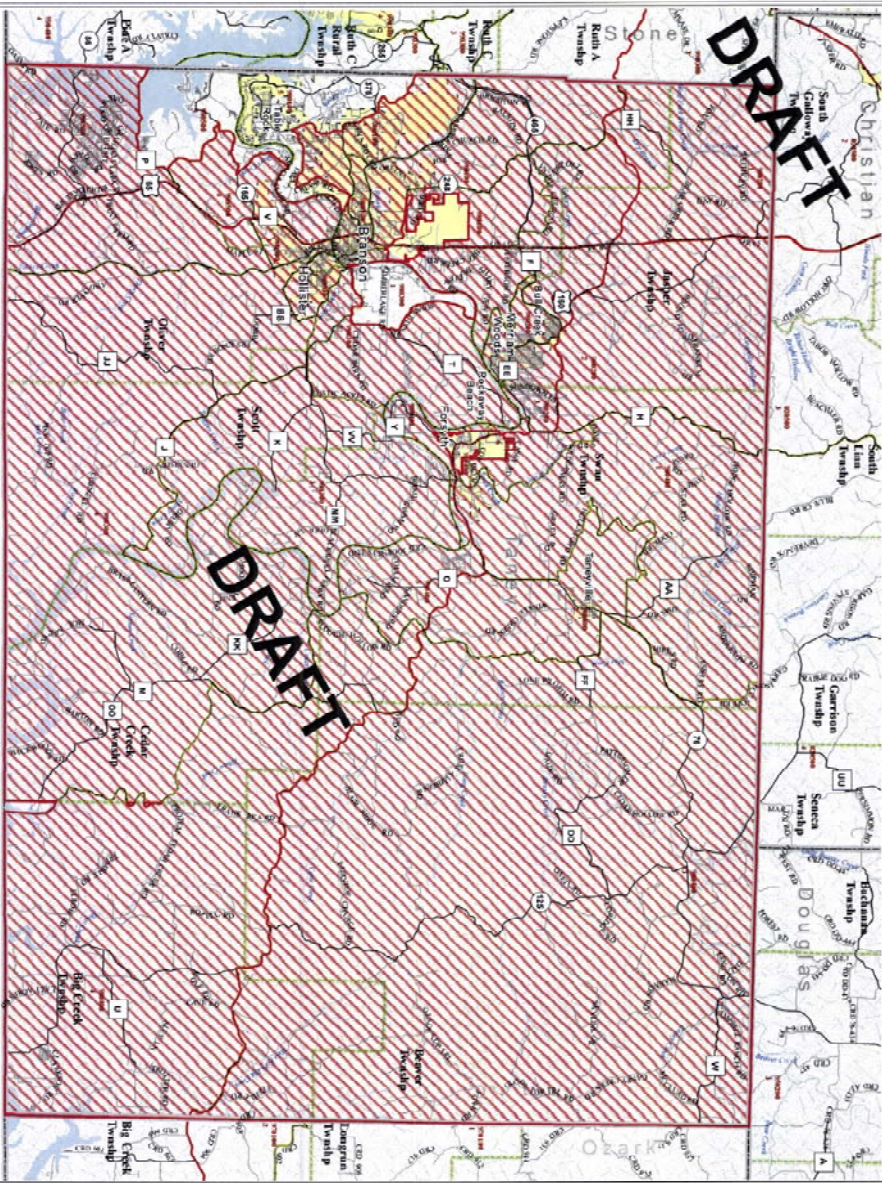
Commissioner Houseman asked Carol Shoemaker of the Missouri Department of Economic Development if there was anything else to do and she responded that everything had been covered. Carol asked for the types of NAICS that you do not want. Jonas explained NAICS.

The following is a list of the recommended NAICS codes:

Sector Description

- 11 Agriculture, Forestry, Fishing and Hunting
- 21 Mining, Quarrying, and Oil and Gas Extraction
- 22 Utilities
- 23 Construction
- 31-33 Manufacturing
- 42 Wholesale Trade
- 48-49 Transportation and Warehousing
- 51 Information
- 52 Finance and Insurance
- 53 Real Estate and Rental and Leasing
- 54 Professional, Scientific, and Technical Services
- 55 Management of Companies and Enterprises
- 56 Administrative and Support and Waste Management and Remediation Services
- 62 Health Care and Social Assistance
- 71 Arts, Entertainment, and Recreation (Sub-code 7132 Gambling: Excluded)
- 72 Accommodation and Food Services (Sub-code 722 Food and Drinking Places: Excluded)
- 81 Other Services (except Public Administration) (Sub-code 8131 Religious Organizations: Excluded)

ARKANSAS



# Taney County Enhanced Enterprise Zone

## REFERENCE

- Enterprise Zone Boundary
- County Boundary
- Biographic Boundary
- Township Boundary
- Rail Station
- US Highway
- Rail Main Network
- State Highway
- State Road
- Street
- Water
- Vertical Boundary



**DRAFT**

Date: 11/14/2012  
 Prepared by: [illegible]  
 Checked by: [illegible]  
 Approved by: [illegible]  
 Project: [illegible]

Jonas closed with informing those present that the EEZ Board itself does not have decision making power. Its role is advisory to the County Commission. It was also noted that retail is not included in the NAICS codes.

Commissioner Houseman suggested that we adjourn and place this issue on the County Commission's agenda. Commissioner Strafuss made a motion to adjourn. Commissioner Strahan seconded the motion. The motion passed by vote: Houseman (aye), Strahan (aye), and Strafuss (aye).

**ADJOURN**  
**6:30 PM**

The minutes were taken by Donna Neeley and typed by Donna Neeley and Stacey Clemans.